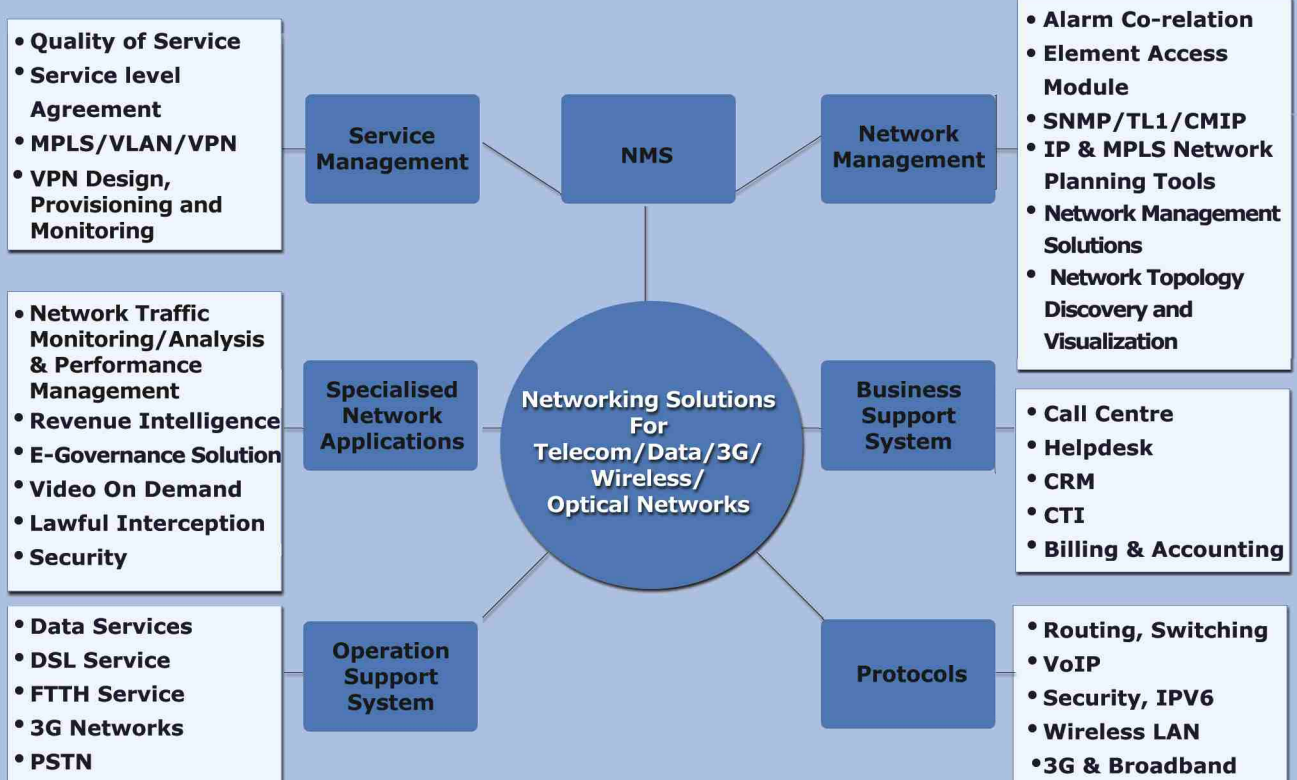


## Telecom & Datacom Services

NETWORK PROGRAMS™

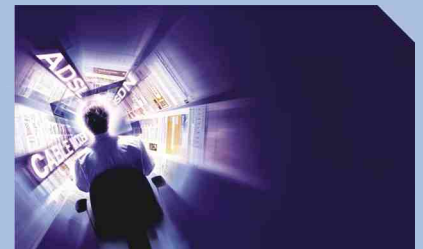
www.networkprograms.com

Network Programs has rich experience of developing software applications for the domains of telecom, Wireline, Wireless (GSM, CDMA, GPRS), IP & MPLS, SS7, 3G and DSL Networks. The Telecom/Datacom solutions conform to ITU-T TMN and TMF (Tele Management Forum) models.



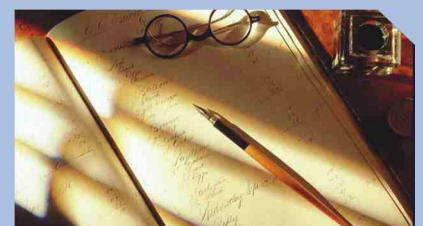
### Network Programs provides services in Telecom/Datacom in following areas-

Business & Operations Support Systems  
 Service & Network Management Systems  
 Switching & IP routing



### Some of the projects executed by Network Programs are-

- Customer Care & Billing for Broadband Networks
- Broadband Service Delivery Platform
- BSS & OSS Integration and application development using Java/J2EE technology for top USA and Japanese telcos and ISPs. Seamless flow through order, provisioning & billing integration of Clarify, Metasolv (TBS), Daleen (RevChain) and home grown OSS subsystems.
- Java/J2EE based Network Applications Platform (NAP) for real time traffic monitoring, analysis and performance management for Wireline, Wireless (GSM, GPRS, CDMA), 3G and IP network.
- Customer Care & Fault Management System for Data Networks
- Element Manager
- Network Management systems for IP Networks, MPLS, VLAN
- Bandwidth Management Systems for IP Services
- Network Planning and Design Tool
- Video on Demand
- Billing mediation Systems
- SLA & QoS Management Systems



# Telecom & Datacom Services

NETWORK PROGRAMS.

www.networkprograms.com

## Business Models

Network Programs can provide such services through various business models as mentioned below:

- **Offshore Development Center** - Network Programs offers a dedicated Offshore Development Center (ODC) model with unique benefits offering total transparency and complete control. The ODC provides experts in areas of technology and management. Network Programs ensures the protection of your intellectual property and commercially sensitive knowledge- backed with a legal non-disclosure agreement. Many Fortune 500 companies have experienced nothing but total trust & commitment while working with the ODC model of Network Programs. They have trusted us with state-of-the art R&D projects for incubation, System Integration for critical subsystems and Platform development for quickly building new products. We have lead their complete development from architecture to design to commercial launch using latest Java/J2EE core technologies, (JMS, JMX, EJB, JTA, JINI, JSP, Servlets) framework and tools (Struts, JSF, Xdoclet/Ant, Websphere, Weblogic, Netcharts, SwiftMQ, ILOG-JTGO etc.)
- **Offshore Projects Execution** - Client can offload work and meet sudden demand for additional manpower without being burdened by project management overheads. Being in the business and having extensive expertise at our disposal, we bring world- class resources, and offer access to new technology, tools and techniques. We offer structured methodologies, procedures and documentation that gives a definite competitive advantage.
- **Offshore Test-lab Center** - Network Programs can partner with you at any stage and for any part of your QA and Testing requirements. We can provide integration tests (integration of several software modules provided by the customer), entire system tests and testing under a simulated environment (during prototyping phase or when the target hardware is under development). We do automated testing, code coverage, memory leak detection, performance profiling, and UML tracing for C, C++, Java, and Ada code. We can test the product for its conformance to the intended features, functionality, usability and load.
- **Onsite Services** - Helps meet sudden demand of skilled engineer at the customer premises.
- **System Integrator** - Network Programs has a unique integration framework to integrate applications, hosts and devices distributed over network. We can integrate components built in diverse technologies and vendors.
- **IPR Driven Services** - Value Addition through Reusable Components and related expertise of Network Programs.
- **Support Services** -
  - Maintenance of Software Products
  - Up gradation of Software Products with new features and architecture
  - Installation and commissioning support for high value and complex products globally including Asia Pacific.

## Key Strengths

- Domain knowledge in the entire breadth of telecom & datacom for managing Wireline, Wireless, DSL, SS7, IP, MPLS 3G Network.
- Reusable components at all layers help in faster development of OSS & NMS solutions
- Solution development experience and expertise across multi-vendor, multi-domain and multiple technologies.
- Ability to work with leading edge technologies.
- End to end network competency.
- Ability to work across all the layers of the Telecommunications Management Network hierarchy including business management, service management, network management, element management and network elements
- Ability to work with all parts of the telecommunications network including customer premises equipment, access network, switching, transmission and operational support systems
- Flexible business model
- Consultancy experience for B&OSS subsystems like Billing Mediation, Customer Care & Billing to leading global telecom players in North America, Australia & Japan.



SEI-CMM Level 5  
ISO 9001:2000  
Quality Takes Us Ahead

## Contact Us

Network Programs Japan Inc.  
Nissho Bldg 3F, 2-2-8,  
Ginza Chuo-Ku,  
Tokyo-104-0061  
Tel : +81-3-3535 8591  
Fax : +81-3-3535 8593

Network Programs USA Inc.  
CA-Mountain View Down Town  
800 West El Camino Real,  
Suite 180 Mountain View,  
CA 94040, USA  
Tel: +1-650-903-2210  
Fax: +1-650-564-9425

Network Programs Australia Pty. Ltd.  
Level 17, BNP Centre  
60 Castlereagh Street  
Sydney, NSW 2000  
Tel : 612-9231-7499  
Fax : 612-9231-7575

Network Programs (India) Ltd.  
B-1-C, Sector - 10,  
Noida - 201301  
Tel : +91-120-2536622  
Fax : +91-120-2536625

1430 Armitage Way  
Mechanicsburg  
PA 17050, USA  
Tel : +1-717- 728 -8811  
Fax: +1-717- 728 -8887

For further queries please contact: [marketing@networkprograms.com](mailto:marketing@networkprograms.com)